



Written and Illustrated by Ruth Grimes © 2009

# Quaters - Halves and Wholes

Using toast and slices of bread to role play with math.

Below are two sets of templates that can be used as outline guides.

Cut a selection of slices from differing materials:

Play foam

Cardboard

Paper

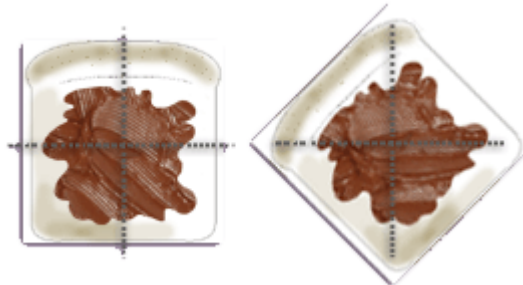
Plastic

Fabric

add scissors to your area of play as the cutting tools.

For other tactile play introduce playdough and use knives to achieve the same separation and knowledge of fraction.

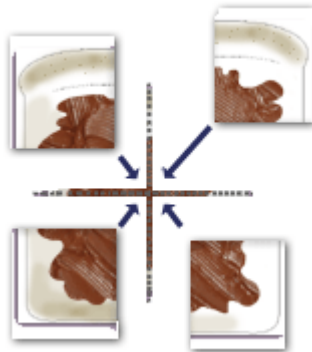
Look at how squares can be cut, or triangles simply by moving the bread in a circular, twist fashion.



Extend to look, or introduce concepts of clock wise and anti clock.

Degrees and angles.

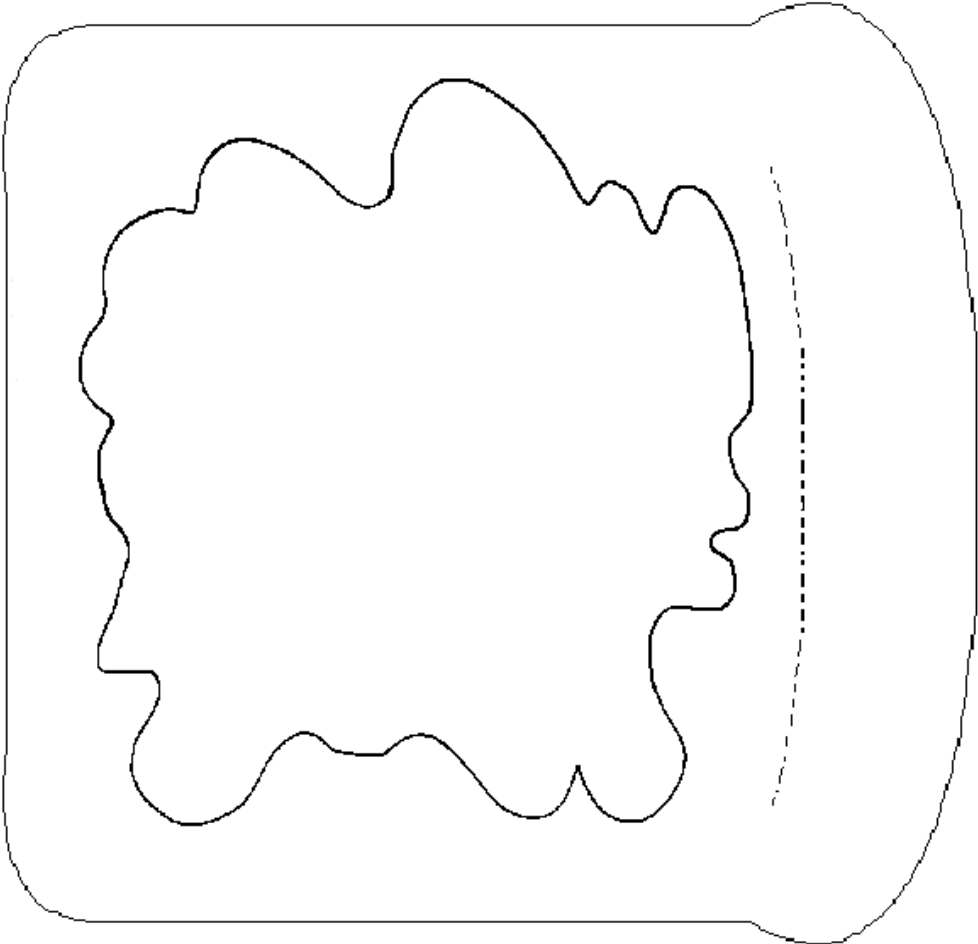
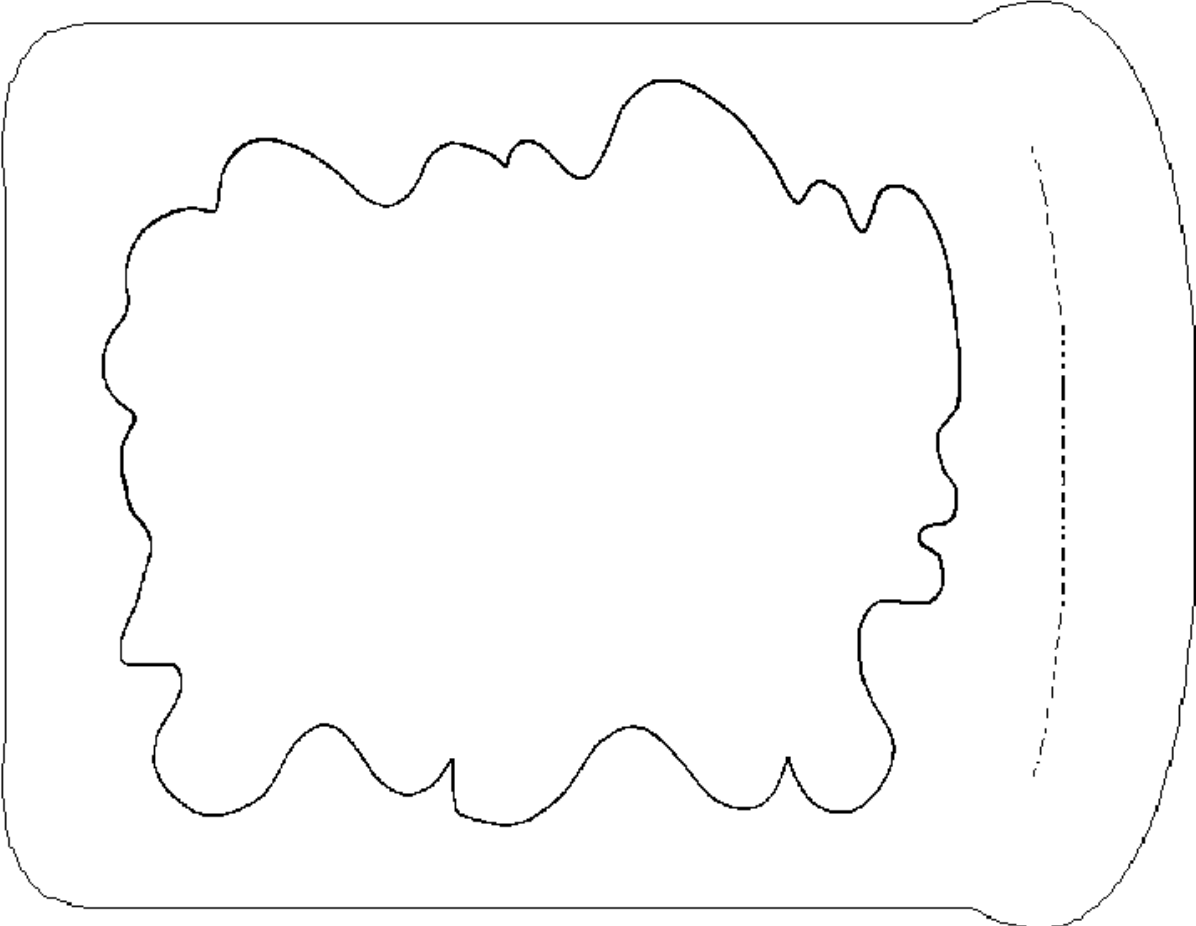
Separation and points of re connection



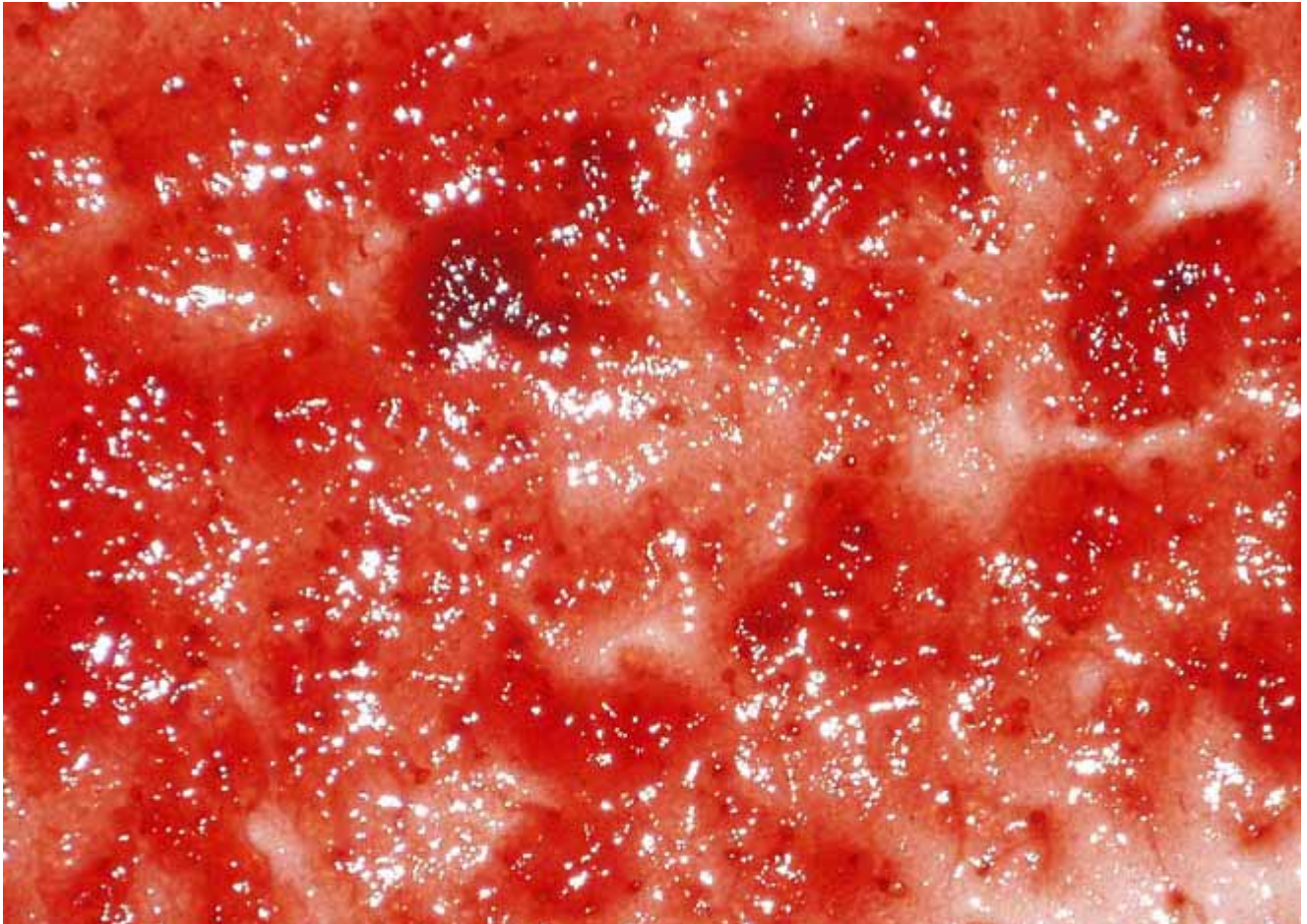
Use these two templates to cut a variety of slices from chosen materials



**Spreads:** print these templates for mark making, collage: colouring, painting, gluing, crayons, chalk and colour recognition activities.



Papers for collage and role play resource making – print, cut and stick to your role play bread ..



Jam and chocolate